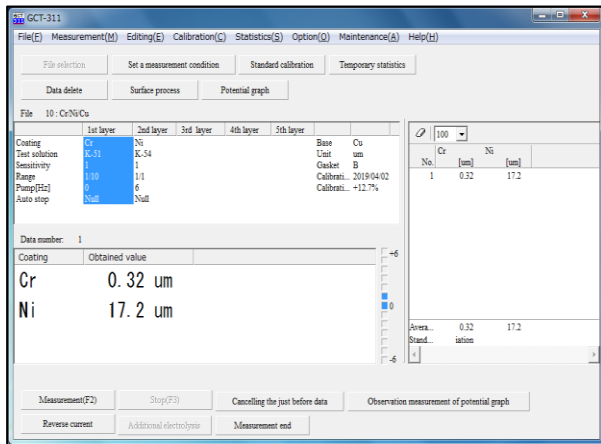


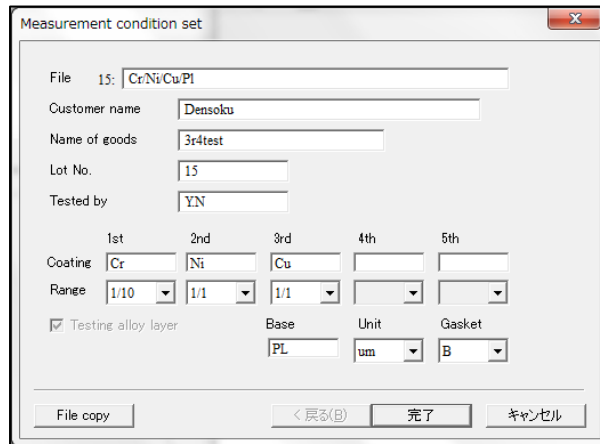
GCT-311 Coulometric Thickness Tester



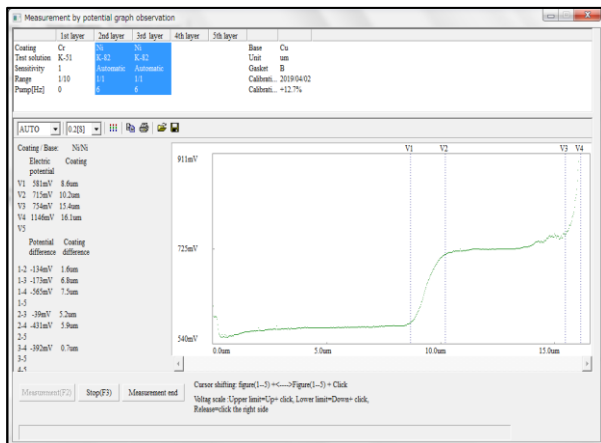
1. Easy and efficient operation by using PC.
2. Easy data processing by Windows application.
3. When incorrect value occurring, red-inked indicator and buzzer warn by setting a limit.
4. 50 channel data can be saved to measurement channel.
5. Five layers can be set and measured.
6. Easy to confirm electric potential difference between W-Ni and Tri-Ni by using electrode (option) and measurement of electric potential graph.
7. Measurement for Sn-Cu can be done separately : Pure Copper layer and Alloy Tin layer each.
8. Automatically indicating a type of test solution by combination for plating and base application.



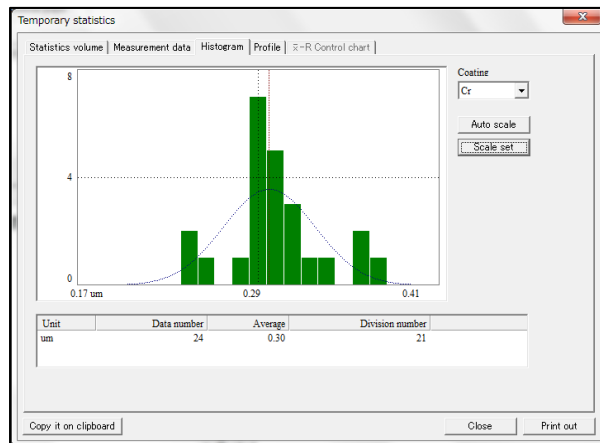
Measurement Screen



Set up for Measurement Condition



Measurement Screen for Electric Potetial



Histogram

Options

Wire Tester : Useful for test sample of wire and small sample : width under 1.7 mm

Specification

A range of measuament thickness	0.006~300μm
Minimum Dissolution Value	0.001/μm
Accuracy of Main Unit	±1%
Measurement Unit	μm,nm,mil,Ml
Dimension	H138xW265xD215mm
Weight	4.5kgs (for Main unit)
Power Supply	AC100V (115V, 200V, 230V) ,50/60Hz
Measurement Aria	A Gasket : 3.4φ
	B Gasket : 2.4φ
	C Gasket : 1.7φ

Principle of measurement

Using an electrolytic solution suitable for the plating metal, a certain area is melted by a constant current, and the plating thickness is measured from the time required for the melting.

Combination of measurement objects

Plating	Base material
Copper	Iron, Aluminum, Nickel, Silver, Kovar,
	Stainless, Non-metal
	Brass, Lead, Zinc die-cast, Tin
Nickel	Iron, Aluminum, Brass, Copper, Stainless,
	Non-metal, Chrome
Electroless Nickel	Iron, Aluminum, Non-metal, Stainless
Chrome	Brass, Copper, Cobalt
	Iron, Aluminum, Nickel, Stainless
Zinc	Iron, Aluminum, Brass, Copper, Nickel, Tin
Tin	Iron, Nickel, Non-metal, Aluminum
	Copper, Brass
Silver	Iron, Aluminum, Non-metal, Stainless
	Brass, Copper, Tin, Non-metal
	Nickel
Solder	Iron, Aluminum, Brass, Copper, Non-metal
Cobalt	Iron, Brass, Copper, Non-metal
Brass	Iron, Aluminum, Non-metal, Stainless

* The above is a typical combination of measurements.
 * Specifications, appearance, etc. are subject to change without notice for improvement.



SANKO ELECTRONIC LABORATORY CO.,LTD.

URL:https://www.sanko-denshi.co.jp E-mail:info@sanko-denshi.co.jp